



SPECIFICATION BREAKDOWN

FUJIFILM Healthcare Solution

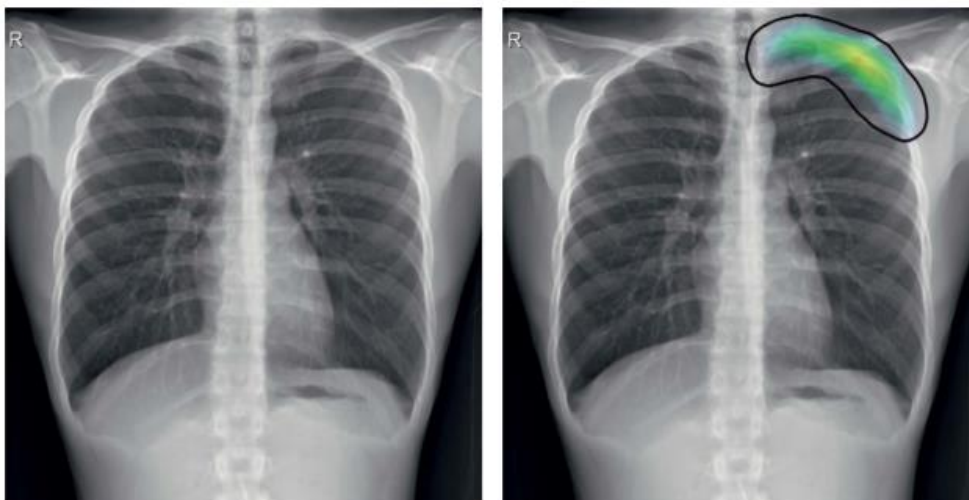
FDR X-AIR SPECIFICATION	
Xray Portable	
Brand Name	Portable X-ray Unit XD2000
Rated supply voltage	100-240V (AC)
Rated supply frequency	50-60Hz
Maximum power consumption	450 W
Power input	1.5A
Maximum power	450 W (90 kV, 5 mA)
Tube current	5 mA (fixed)
Tube voltage range	50-90 kV 2-kv increment
Tube current time product setting range[mAs]	0.20 to 2.50 mAs (12 steps)
Exposure time range	0.04-0.5 sec
Target angle	16°
Anode type	Fixed anode
Startup time:	Time from turning the power on and becoming ready for exposure is 120 seconds or less
Minimum X-ray radiation interval	8 seconds
Charging time from empty to full	4.5h
Battery	Lithium polymer, 11.1V, 1450mAh
Weight	3.5kg
Dimensions	301x257x144mm
Environment conditions ; Operating	Temperature 15°C-30°C ; Humidity: 15-80%RH (no dew condensation)
Environment conditions ; Storage/transport environment	Temperature: -10°C-50°C ; Humidity: 10-90%RH (no dew condensation)
Detector	
Size	35x43 cm (14x17 inch)
Connectivity	Wireless
Surface Load	310 Kg
Image storage No. for Memory Exposure mode (on Panel)	up to 100 images
Waterproof	IPX6 conformed
Antibacterial (Hydro Ag)	Yes, ISO22196



SPECIFICATION BREAKDOWN

FUJIFILM Healthcare Solution

ARTIFICIAL INTELLIGENCE	
AI CXR	
Detected Radiologic Finding	Atelectasis
	Calcification
	Cardiomegaly
	Consolidation
	Fibrosis
	Mediastinal Widening
	Nodule/Mass
	Pleural Effusion
	Pneumoperitoneum
	Pneumothorax



AI detects abnormalities